

PLATE FLAWS IN '15'
Agricultural Technology
India Definitive Stamp

S.P. Bansal



First Published, April 1988

© S. P. Bansal, 1988

Price Rs. 10/-

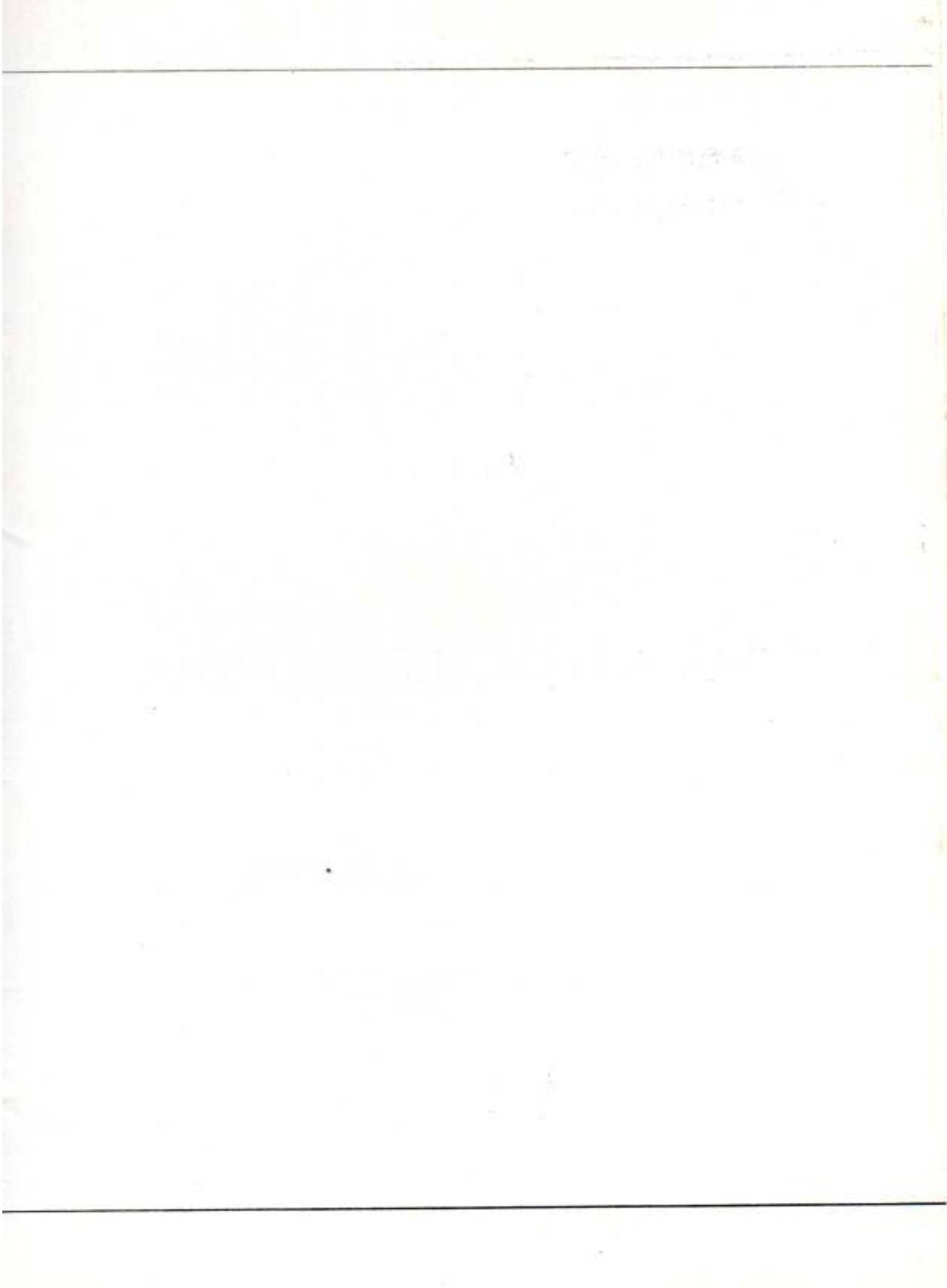
Printed by :
Agra Offset Works,
Agra

PLATE FLAWS IN '15'
Agricultural Technology

(25 - 3 - 81 & 5 - 7 - 82 ISSUE)

India Definitive Stamp

Compiled By -
S. P. BANSAL



In the listing only those flaws are listed, which I have in my own collection or already well documented.

Every care has been taken before listing of flaws, A number of sheets have been studied, In some cases it may be possible, flaws may not be constant.

Plate '21' has two plates in 25.3.81 issue



I

('21' Normal)

C 21
C 21



II

('1' in '21' inclined and without serif)

20, Hanuman Road,
FIROZABAD
283 203

S.P. Bansal

The '15' blue green stamp was first issued 10 March 1980 on 'Large star and govt. of India' watermarked paper, Perforation $14\frac{1}{2} \times 14$. 1981, The same stamp was printed on 'Multiple asoken capital' watermark paper, perforation $14\frac{1}{2} \times 14$: 1982, The stamp was issued in perforation 13×13 , watermark 'Multiple asoken capital'. 1985, Sheet issued with imprint 'New Gumming- Wet Well & Press I.S.P. Nashik-Road'.

C1 to C13 Plates used 10.3.80 issue.

C13 to C27 Plates used 25.3.81 issue.

C27 to C42 Plates used 5.7.82 issue.

C44 to C88 Plates have digital numbers.

C1 to C.....Plates with imprint, 'New Gumming'. issued '85.

1984 'Asoken capital' has narrow base also as 8mm. against 10mm. Stamps are printed at India security press, 100(10 \times 10), stamps in a sheet.



Asoken Capital Wmk.



Star and Govt. of India. Wmk.



Imprint, 'New Gumming'.

PLATES FLAWS IN 25.3.81 ISSUE.



PLATE 13, PANE 1.

- F 1. Flaw on '5', R1/1.
- F 2. White spot near 1st 'I' of 'India', R1/2.
- F 3. Spot on right shoulder, R1/2.



PLATE 18, PANE 2.

- F 4. White spot on wheat corn, R8/8.
- F 5. R8/8, Flaw retouched.



PLATE 18, PANE 4.

F 6. Broken stalk R7/4 exist Plate 18, 19

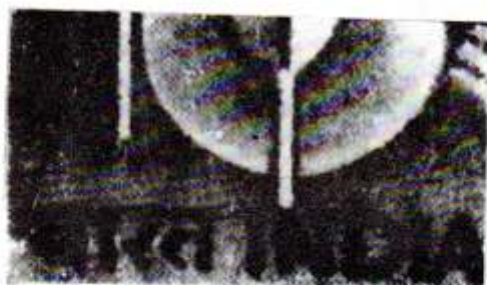


PLATE 19, PANE 3.

F 7. Broken frame line, R4/6.

F 8. Spot on '1' of '15', R6/1.

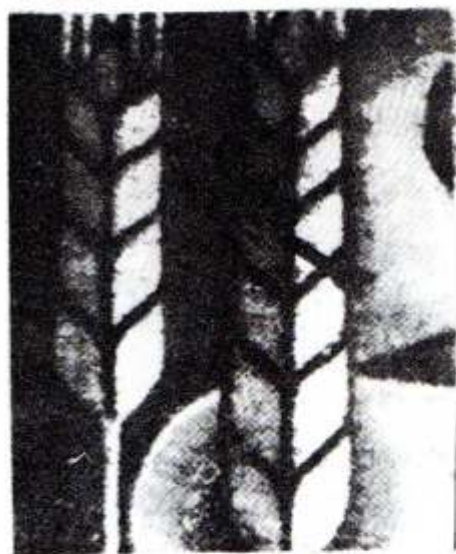
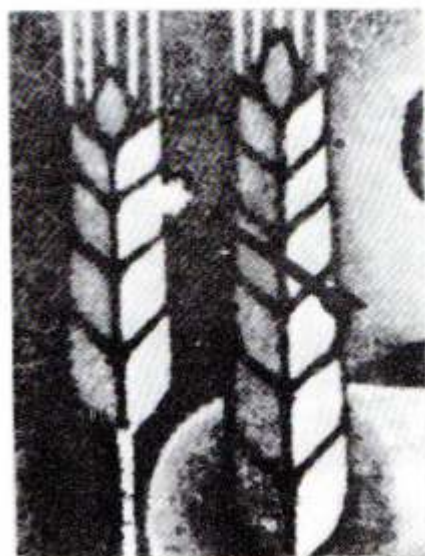


PLATE 19, PANE 4.

F 9. White spot near wheat corn, R10/6.

F10. R10/6, Flaw retouched.

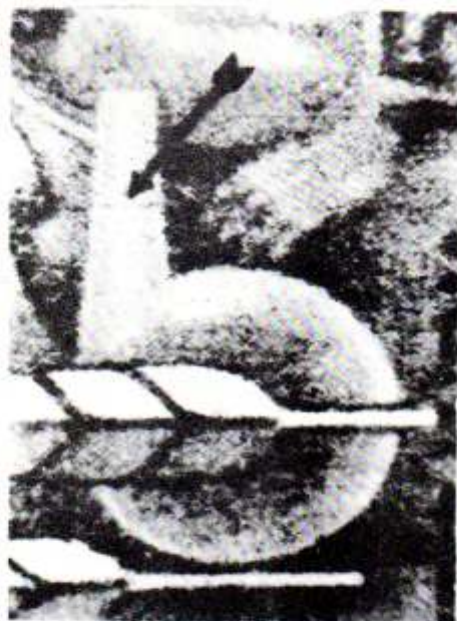
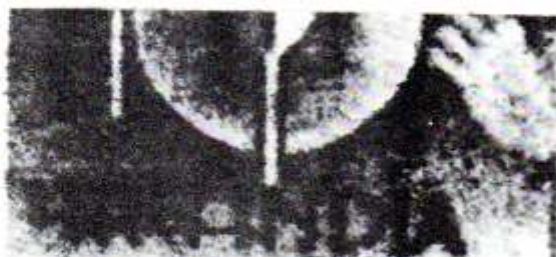


PLATE 20, PANE 3.

- F11. Spot on '5' of '15', R2/3.
- F12. 'N' of India deform, R9/6.
- F13. Line on retort, R10/4.
- F14. Curved frame below '15', R10/10.



PLATE 21, PANE 2 (I).

F15. Flaw on '5' of '15', R1/10.

F16. Second 'I' of 'India' broken, R6/10.

F17. Flaw on '1' of '15', R9/9.



PLATE 21, PANE 3 (II).

F18. White spot, curve of '5', R5/3.

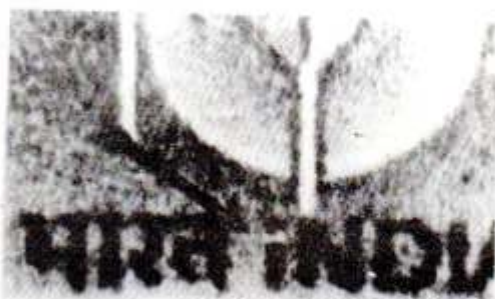


PLATE 21, PANE 4 (I).

F19. '1' broken of '15', R8/2.

F20. 1st. 'I' of 'India' broken, R8/3.



PLATE 24, PANE 3.

F21. Line on '1' of '15', R3/2.

F22. Coloured spot on man's left shoulder, R4/3.



PLATE 25, PANE 1.

F23. Spot on wheat corn, R10/4.

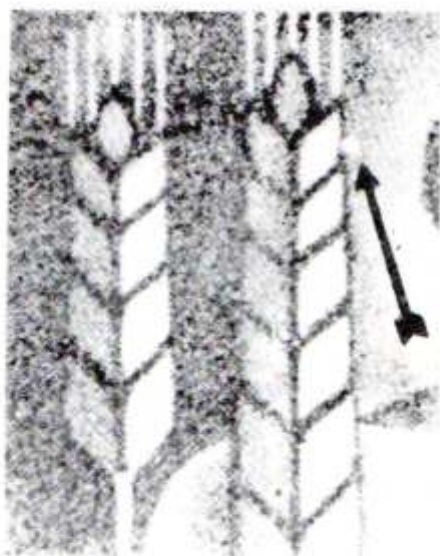


PLATE 25, PANE 3.

F24. Spot near wheat corn, R4/5.

F25. Spot on neck, R6/2.



PLATE 25, PANE 3.

F26. Retouch on wheat corn, R9/8.

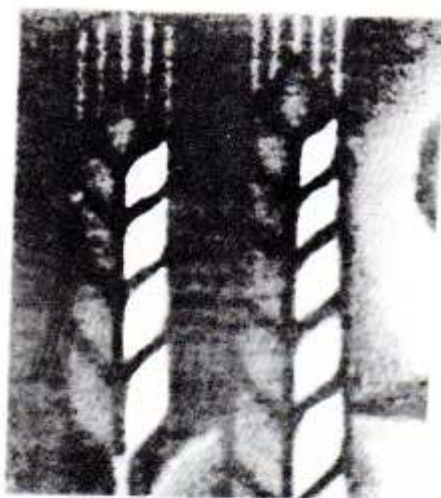


PLATE 26, PANE 4.

F27. Spot on wheat corn, R10/9.

PLATE FLAWS IN 5.7.82. ISSUE.



PLATE 29, PANE 4.

F28. Hindi letters retouched, R10/1.



PLATE 32, PANE 2.

F29. Coloured spot above '15', R10/5.



PLATE 42, PANE 1.

- F30. White spot on plough, R4/3.
- F31. White spot near Hindi letter 'त' R9/4.
- F32. White spots on turban, R10/4.



PLATE 42, PANE 2.

F33. White line near value '15', R1/9.

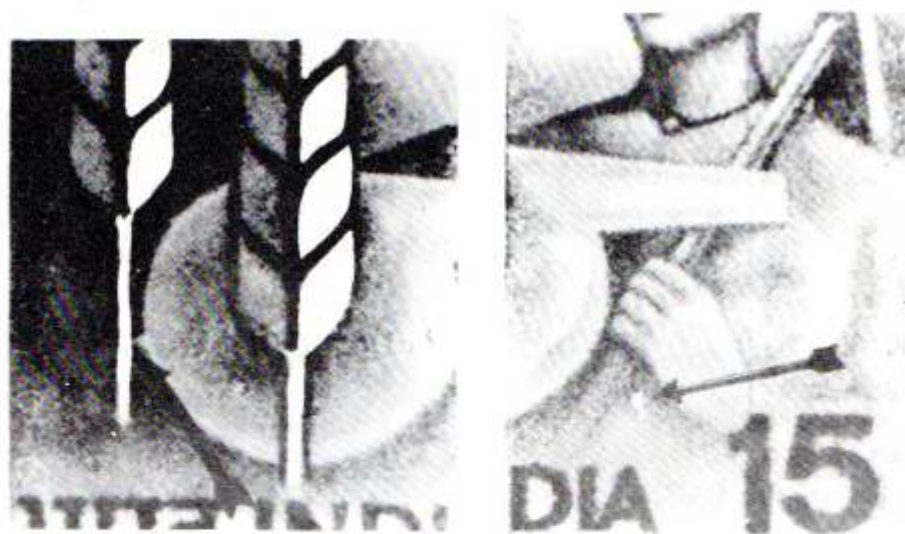


PLATE 42, PANE 3.

F34. Broken stalk, R2/2.

F35. White spot near hand, R6/1.



PLATE 42, PANE 3.

F36. Spot near 1st. 't' of 'India', R9/1.



PLATE 42, PANE 4.

F37. Coloured spot on 1st. 't' of 'India', R9/6.

NOTES

